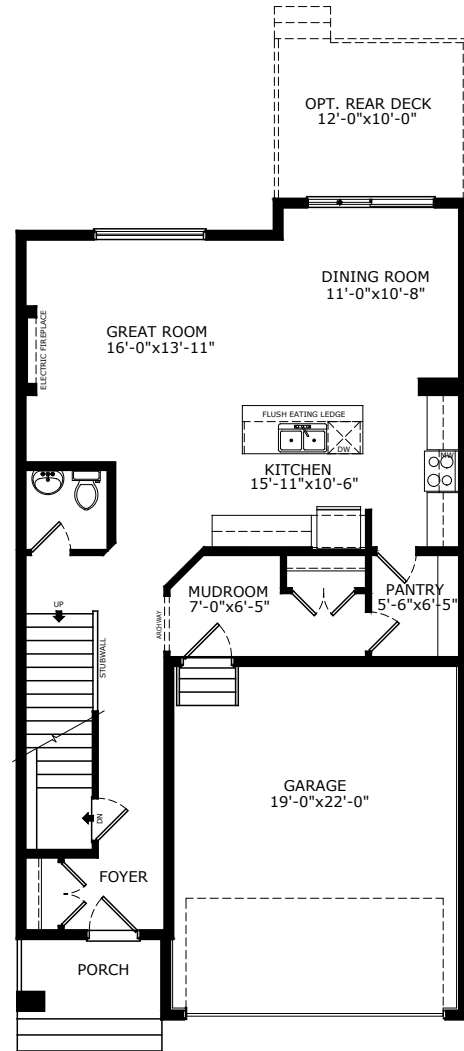
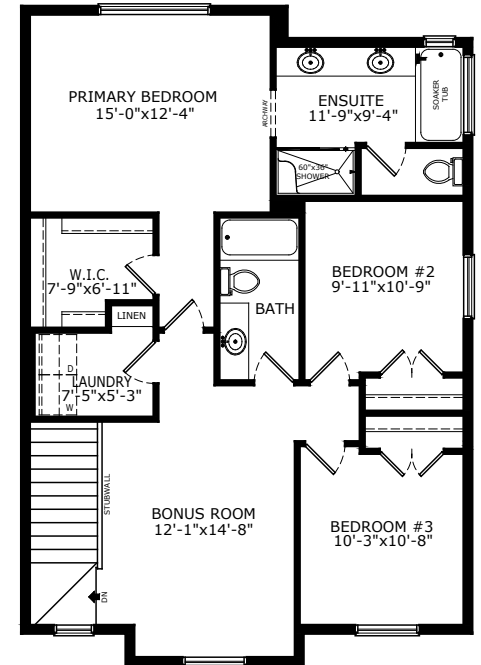


1983 SQ FT
3 BEDS
2.5 BATH

OLIVIA



MAIN: 945 SQ FT



UPPER: 1038 SQ FT

Sterling HOMES

A QUALICO Company

ELEVATIONS



PRAIRIE



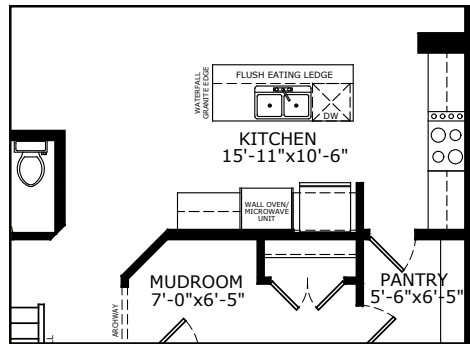
FARMHOUSE



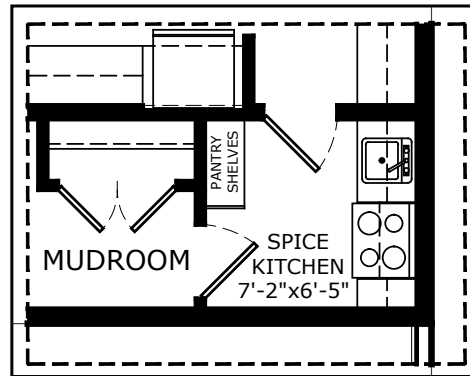
CRAFTSMAN

MAIN FLOOR OPTIONS

OPTIONAL EXECUTIVE KITCHEN

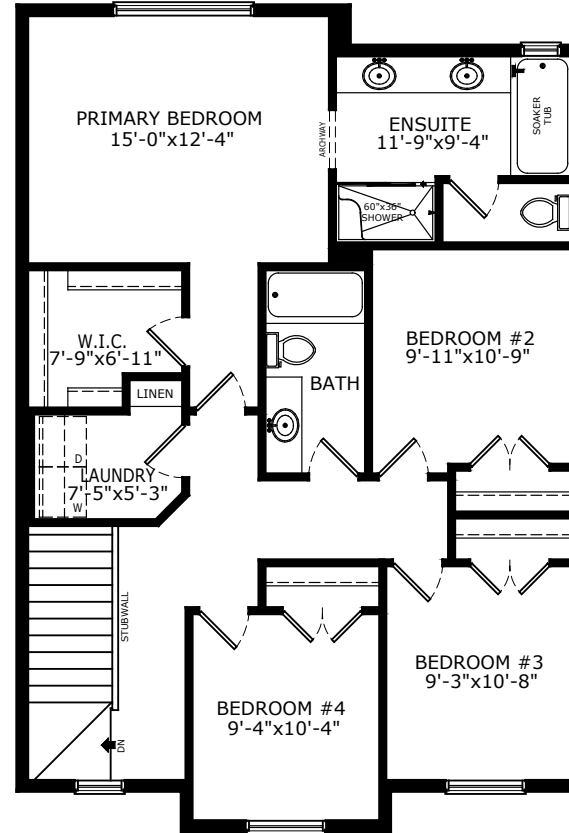


OPTIONAL SPICE KITCHEN



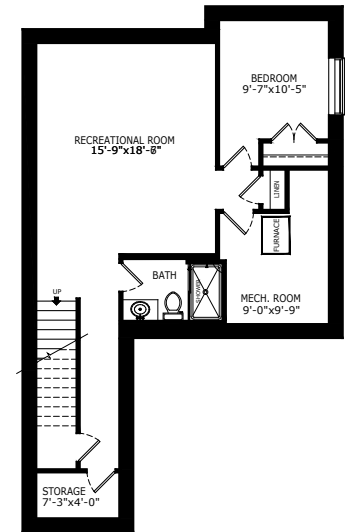
UPPER FLOOR OPTIONS

OPTIONAL 4 BEDROOMS

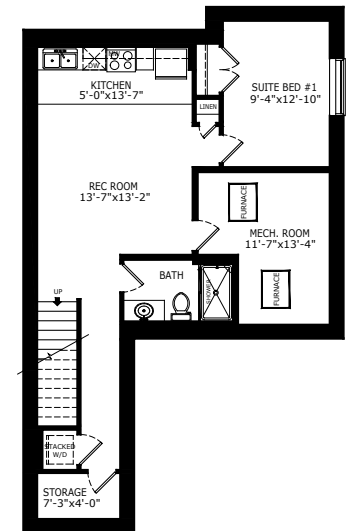


BASEMENT OPTIONS

STANDARD 677 SQ FT



1 BEDROOM
'LEGAL SUITE' 664 SQ FT



*Legal Suite availability varies by community and municipal regulations.



Scan here
for floorplan
options and
more

Build Your Life

STERLINGCALGARY.COM